



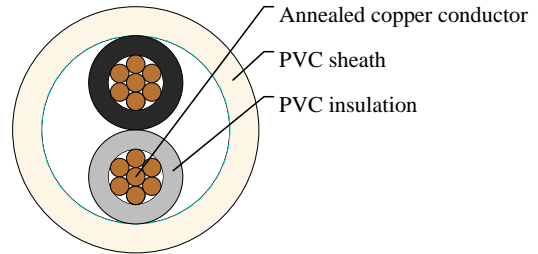
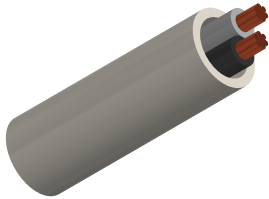
Caledonian

JIS Code Power & Control Cables

www.caledonian-cables.com

marketing@caledonian-cables.com

VVR 2C2.5



APPLICATIONS

Exposed wiring in air or use in raceway wet or dry location, direct burial in ground.

STANDARDS

TIS 11-2531

CABLE CONSTRUCTION

Conductor: Stranded annealed copper

Insulation: Polyvinyl chloride (PVC)

2 cores – Light gray and Black

Sheath: Polyvinyl chloride (PVC), white color

PHYSICAL AND THERMAL PROPERTIES

Maximum conductor temperature 70°C

Circuit voltage not exceeding 300 volts

Test voltage 2000 volts

DIMENSION AND PARAMETERS

No. of Cores	Conductor Size	No. and Dia. of Wires	Nominal Insulation Thickness	Nominal Sheath Thickness	Overall Diameter (max.)	Approx. Weight	Min. Insulation Resistance at 70 °C	Current rating in the air
	mm ²	no./mm	mm	mm	mm	kg/km	Ohm/km	A
2	2.5	7/0.67	0.7	1.2	11	130	0.0084	24